

**PIVOT  
POINT**

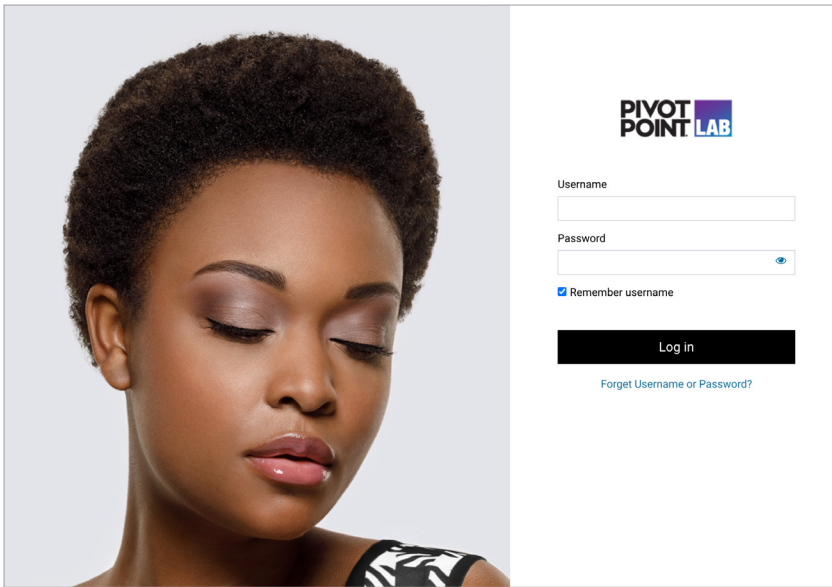
# HAIR & KITS



# FUNDAMENTALS: COSMETOLOGY

## THE STARTER

Enhance your students' education by providing them with high-quality hair and essential tools to get them started.



**LAB STUDENT SEAT INCLUDING  
PIVOT POINT FUNDAMENTALS: COSMETOLOGY**



**CUSTOM-DESIGNED 5-PIECE BRUSH SET**

- Medium Round Brush
- Large Round Brush
- Extra-Large Round Brush
- Cushion Brush
- Paddle Brush

### EDUCATION

*Pivot Point Fundamentals:  
Cosmetology 2<sup>nd</sup> Edition*  
Printed Study Guide

24-MONTH LAB SEAT:  
Workshop Videos  
eBooks  
Integrated Lesson WebBooks  
Learning Connections  
Slide Presentations  
Design Decisions Charts  
Rubrics  
Exam Ace



**PRINTED STUDY GUIDE**  
The perfect complement to the digital program delivered through LAB.



**DIGITAL TIMER**




**AMBER CAP**



**ERIKA CAP**

**REUSABLE HEADFORM**



**CUTTING COMB**



**MANICURE KIT**



**SHINZU SHEARS**

### TOOLS

**ESSENTIALS KIT: COSMETOLOGY**  
Digital Timer  
Razor Hair Shaper  
6 C-Clips  
Control Clips, 50 ct./ea.  
Double-Prong and Single-Prong  
Aluminum Spray Bottle  
Small Applicator Bottle  
Color Bowl  
6 Cutting Combs  
3 Tail II Combs  
Teaser/Lift Comb  
2 Large Tint Brushes  
Acrylic Mirror  
6-Pc. Manicure Kit

### SHEARS

5.5" Shinzu Cutting Shears  
5.5" Shinzu Texturizing Shears

### ELECTRICAL STYLING KIT

1875-Watt Compact  
Professional AC Dryer  
1" Ceramic Tourmaline Flat Iron  
1" Ceramic Tourmaline Marcel Iron  
Wahl Designer  
Wahl Peanut

### A LA CARTE

Extra-Large Round Brush  
Large Round Brush  
Medium Round Brush  
Paddle Brush  
Cushion Brush

### EDUCATIONAL HAIR

Erika Cap  
Amber Cap  
Ethan Cap Series  
Compatible Slip-On  
Reusable Headform  
Cap Series Dryerpost

# FUNDAMENTALS: COSMETOLOGY

## THE NOVICE

Our entry-level kit includes hair necessary to complete the ladies cutting workshops, our better lineup of tools and features Pivot Point *Fundamentals: Cosmetology 2<sup>nd</sup> Edition* on LAB with a printed study guide.



**ELECTRICAL STYLING KIT**  
1875-Watt Compact Professional AC Dryer  
1" Ceramic Tourmaline Flat Iron  
1" Ceramic Tourmaline Marcel Iron



**WAHL CLIPPERS & TRIMMERS**



**PRINTED STUDY GUIDE**  
The perfect complement to the digital program delivered through LAB.



**CUSTOM-DESIGNED 5-PIECE BRUSH SET**  
Medium Round Brush  
Large Round Brush  
Extra-Large Round Brush  
Cushion Brush  
Paddle Brush

**BACKPACK**  
Specially designed for the hairdresser; padded, zipped pocket for more fragile tech gadgets; 2 heat-resistant pockets inside; multiple outer pockets and pouches



### EDUCATION

*Pivot Point Fundamentals:*  
Cosmetology 2nd Edition  
Printed Study Guide  
24-MONTH LAB SEAT:  
Workshop Videos  
eBooks  
Integrated Lesson WebBooks  
Learning Connections  
Slide Presentations  
Design Decisions Charts  
Rubrics  
Exam Ace

### TOOLS

**ESSENTIALS KIT:**  
COSMETOLOGY  
Digital Timer  
Razor Hair Shaper  
6 C-Clips  
Control Clips, 50 ct./ea.  
Double-Prong and Single-Prong  
Aluminum Spray Bottle  
Small Applicator Bottle

Color Bowl  
6 Cutting Combs  
3 Tail II Combs  
Teaser/Lift Comb  
2 Large Tint Brushes  
Acrylic Mirror  
6-pc. Manicure Kit

### SHEARS

5.5" Shinzu Cutting Shears  
5.5" Shinzu Texturizing Shears

### ELECTRICAL STYLING KIT

1875-Watt Compact Professional AC Dryer  
1" Ceramic Tourmaline Flat Iron  
1" Ceramic Tourmaline Marcel Iron  
Wahl Designer  
Wahl Peanut

### A LA CARTE

Backpack  
Cape  
Apron  
Extra-Large Round Brush  
Large Round Brush  
Medium Round Brush  
Paddle Brush  
Cushion Brush  
9-Row Air Forming Brush  
Small Cushion Brush  
Plastic Swivel Holder

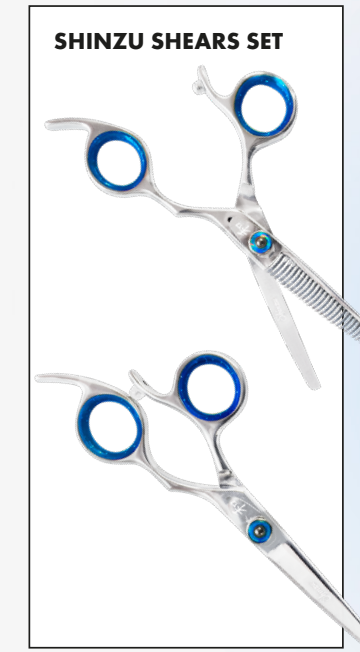
### EDUCATIONAL HAIR

Erika Cap  
Ivee Cap  
Amber Cap  
Alyse Cap  
Ethan Cap Series Compatible Slip-On  
Reusable Headform  
Cap Series Dryerpost



**ERIKA CAP**

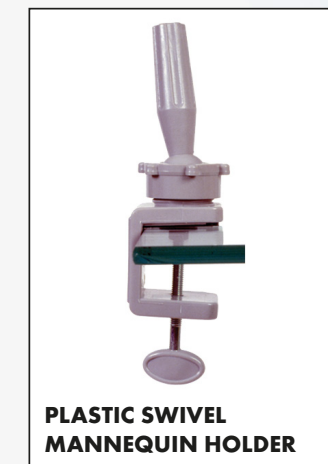
**REUSABLE HEADFORM**



**SHINZU SHEARS SET**



**ETHAN CAP SERIES COMPATIBLE SLIP-ON**

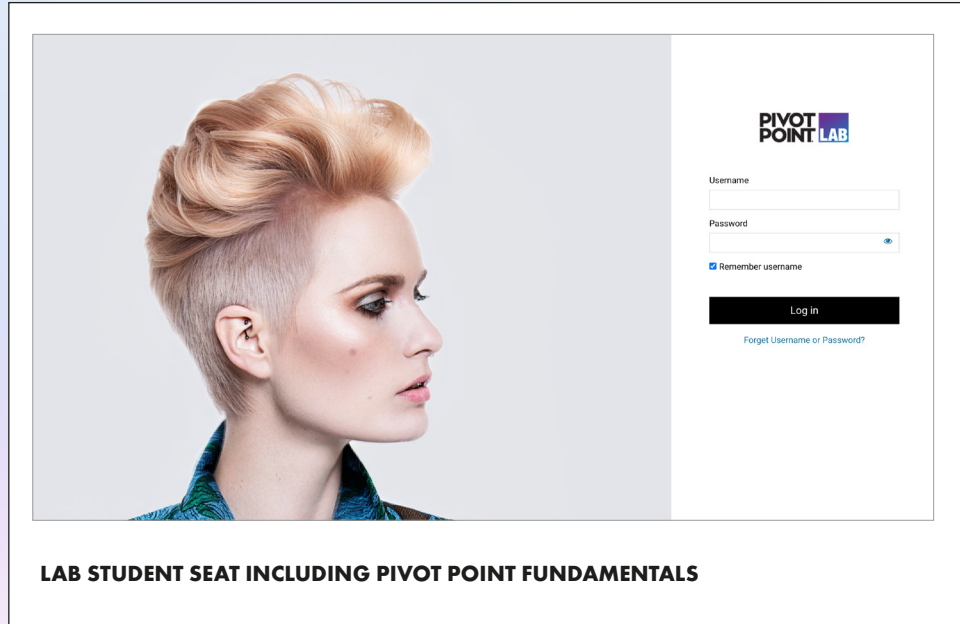


**PLASTIC SWIVEL MANNEQUIN HOLDER**

# FUNDAMENTALS: COSMETOLOGY

## THE PRO

Elevate your student experience by adding more hair to the Novice kit with upgraded shears, clippers and trimmers, bag and mannequin holder.



### EDUCATION

- Pivot Point *Fundamentals*:  
 Cosmetology  
 Printed Study Guide  
 24-MONTH LAB SEAT:  
 Workshop Videos  
 eBooks  
 Integrated Lesson WebBooks  
 Learning Connections  
 Slide Presentations  
 Design Decisions Charts  
 Rubrics  
 Exam Ace

### TOOLS

- ESSENTIALS KIT: COSMETOLOGY  
 Digital Timer  
 Razor Hair Shaper  
 6 C-Clips  
 Control Clips, 50 ct./ea.  
 Double-Prong and Single-Prong  
 Aluminum Spray Bottle  
 Small Applicator Bottle  
 Color Bowl  
 6 Cutting Combs  
 3 Tail II Combs  
 Teaser/Lift Comb  
 2 Large Tint Brushes  
 Acrylic Mirror  
 6-Pc. Manicure Kit

### SHEARS

- 5.5" Shinzu Cutting Shears
- 5.5" Shinzu Texturizing Shears

### ELECTRICAL STYLING KIT

- 1875-Watt Compact Professional AC Dryer
- 1" Ceramic Tourmaline Flat Iron
- 1" Ceramic Tourmaline Marcel Iron
- Wahl Designer
- Wahl Peanut

### A LA CARTE

- Backpack
- Luggage on Wheels
- Cape
- Apron
- Extra-Large Round Brush



- Large Round Brush
- Medium Round Brush
- Paddle Brush
- Cushion Brush
- 9-Row Air Forming Brush
- Small Cushion Brush
- Metal Adjustable Mannequin Holder

### EDUCATIONAL HAIR

- Erika Cap
- Ivee Cap
- Amber Cap
- Alyse Cap
- Ethan Cap Series
- Compatible Slip-On Reusable Headform
- Cap Series Dryerpost

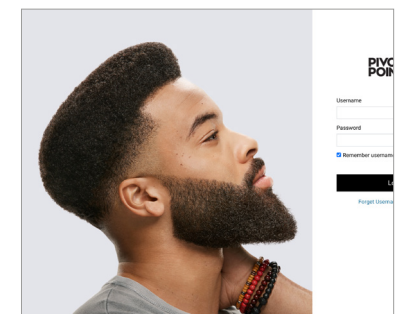
# FUNDAMENTALS: BARBERING

## THE STARTER

Enhance your students' education by providing them with high-quality hair that will give them the most realistic, hands-on experience.



**PRINTED STUDY GUIDE**  
The perfect complement to the digital program delivered through LAB.



**LAB STUDENT SEAT INCLUDING PIVOT POINT FUNDAMENTALS: BARBERING**

### EDUCATION

Pivot Point *Fundamentals: Barbering*  
Printed Study Guide

### 24-MONTH LAB SEAT:

- Workshop Videos
- eBooks
- Integrated Lesson WebBooks
- Learning Connections
- Interactive Video Lectures
- Design Decisions Charts
- Rubrics
- Exam Ace

### EDUCATIONAL HAIR

- Erika
- Ian
- Cameron

### TOOLS

#### ESSENTIALS KIT: BARBERING

- Styling Razor With 10 Blades
- 12 Duckbill Clips
- Aluminum Spray Bottle
- Hand Mirror
- Fade Brush
- Large Wide-Tooth Comb
- 2 Large Cutting Combs
- 6 Cutting Combs
- 3 Taper Combs
- 2 Flat-Top Combs
- Tail II Comb
- Hair Pick
- Digital Timer
- Small Applicator Bottle
- Color Bowl
- Large Tint Brush
- Small Tint Brush

### SHEARS

- 6" Shinzu Cutting Shears
- 6" Shinzu Texturizing Shears

### ELECTRICAL TOOLS

- Wahl Designer
- Wahl Peanut



**SHINZU SHEARS**



**ERIKA MANNEQUIN**

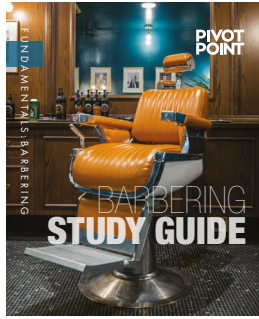
**IAN MANNEQUIN**

**CAMERON MANNEQUIN**

# FUNDAMENTALS: BARBERING

## THE NOVICE

Our entry-level kit includes hair necessary to complete the cutting workshops, our better lineup of tools and features Pivot Point *Fundamentals: Barbering* on LAB with a printed study guide.



**PRINTED STUDY GUIDE**  
The perfect complement to the digital program delivered through LAB.



**WAHL CLIPPERS, TRIMMER & SHAVER**



**BACKPACK**  
Features a padded, zipped pocket for more fragile tech gadgets; 2 heat-resistant pockets inside; multiple outer pockets and pouches



**PLASTIC SWIVEL MANNEQUIN HOLDER**



**1875-WATT COMPACT PROFESSIONAL AC DRYER**



**MEDIUM ROUND BRUSH**



**IAN MANNEQUIN**



**COLE MANNEQUIN**



**CAMERON MANNEQUIN**

**ERIKA MANNEQUIN**

### EDUCATION

Pivot Point *Fundamentals: Barbering*

Printed Study Guide

24-MONTH LAB SEAT:

- Workshop Videos
- eBooks
- Integrated Lesson WebBooks
- Learning Connections
- Interactive Video Lectures
- Design Decisions Charts
- Rubrics
- Exam Ace

### TOOLS

ESSENTIALS KIT: BARBERING

- Styling Razor With 10 Blades
- 12 Duckbill Clips
- Aluminum Spray Bottle
- Hand Mirror

- Fade Brush
- Large Wide-Tooth Comb
- 2 Large Cutting Combs
- 6 Cutting Combs
- 3 Taper Combs
- 2 Flat-Top Combs
- Tail II Comb
- Hair Pick
- Digital Timer
- Small Applicator Bottle
- Color Bowl
- Large Tint Brush
- Small Tint Brush

### SHEARS

- 6" Shinzu Cutting Shears
- 6" Shinzu Texturizing Shears

### ELECTRICAL TOOLS

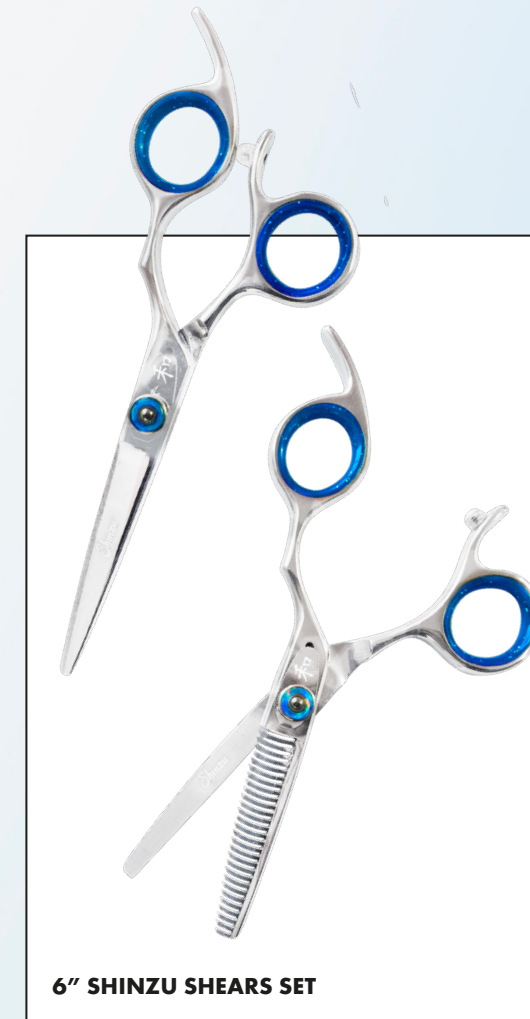
- 1875-Watt Compact Professional AC Dryer
- Wahl 5-Star Senior
- Wahl 5-Star Detailer
- Wahl 5-Star Shaver

### A LA CARTE

- Straight Razor With 100 Blades
- Backpack
- Cape
- Apron
- Medium Round Brush
- Vent Brush
- 9-Row Air Forming Brush
- Plastic Swivel Holder

### EDUCATIONAL HAIR

- Erika
- Ian
- Cole
- Cameron



**6" SHINZU SHEARS SET**

# FUNDAMENTALS: BARBERING

## THE PRO

Elevate your student experience by adding more hair and tools to the Novice kit with upgraded shears, clippers, trimmers and mannequin holder.



**7" SHARK FIN SHEAR SET**



**ERIKA MANNEQUIN**

**CAMERON MANNEQUIN**



**ANDIS CLIPPERS, TRIMMER & SHAVER**



**STYLING RAZOR**



**IAN MANNEQUIN**



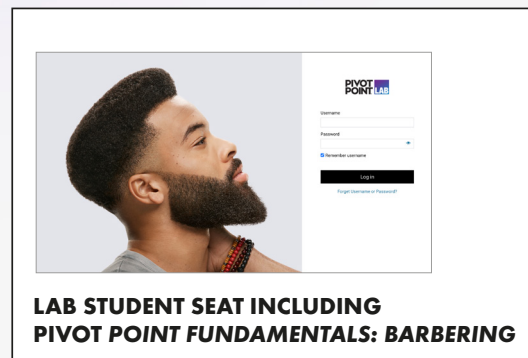
**COLE MANNEQUIN**



**TAPER COMB**



**DUCKBILL CLIPS**



**LAB STUDENT SEAT INCLUDING PIVOT POINT FUNDAMENTALS: BARBERING**



**FADE BRUSH**



**LARGE WIDE-TOOTH COMB**



**METAL ADJUSTABLE MANNEQUIN HOLDER**



**SHAVE BRUSH**

### EDUCATION

Pivot Point *Fundamentals: Barbering*

Printed Study Guide

24-MONTH LAB SEAT:

Workshop Videos

eBooks

Integrated Lesson WebBooks

Learning Connections

Interactive Video Lectures

Design Decisions Charts

Rubrics

Exam Ace

### TOOLS

ESSENTIALS KIT: BARBERING

Styling Razor With 10 Blades

12 Duckbill Clips

Aluminum Spray Bottle

Hand Mirror

Fade Brush

Large Wide-Tooth Comb

2 Large Cutting Combs

6 Cutting Combs

3 Taper Combs

2 Flat-Top Combs

Tail II Comb



**ALUMINUM SPRAY BOTTLE**

Hair Pick

Digital Timer

Small Applicator Bottle

Color Bowl

Large Tint Brush

Small Tint Brush

### SHEARS

7" Shark Fin Cutting Shears

7" Shark Fin Texturizing Shears

### ELECTRICAL TOOLS

1875-Watt Compact

Professional AC Dryer

1" Ceramic Tourmaline Flat Iron

1" Ceramic Tourmaline Marcel Iron

Andis Master

Andis T-Outliner

Andis ProFoil Shaver

### A LA CARTE

Straight Razor With 100 Blades

Medium Round Brush

Large Round Brush

Extra-Large Round Brush

Paddle Brush

Cushion Brush

Vent Brush

Denman Medium Styling Brush

Backpack

Cape

Apron

Shaving Brush

Metal Adjustable Holder

### EDUCATIONAL HAIR

Erika

Ian

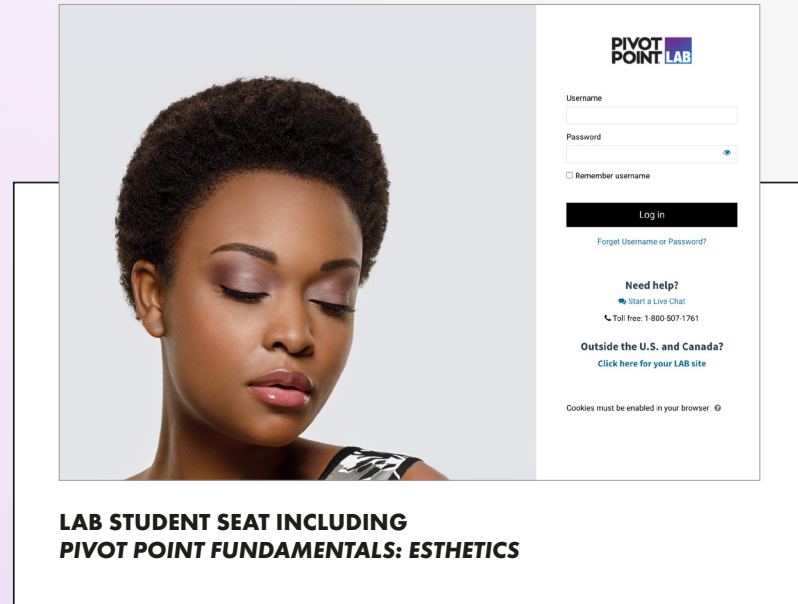
2 Cole

Cameron

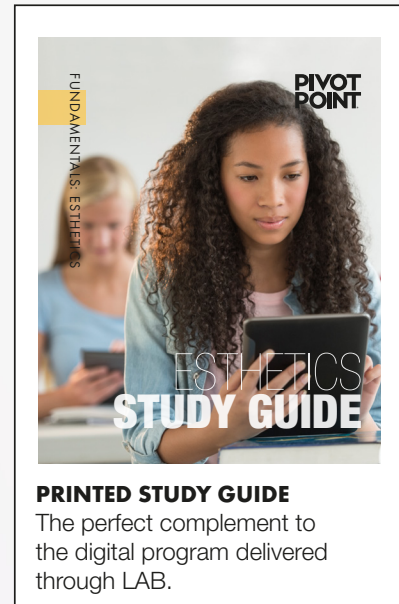
# FUNDAMENTALS: ESTHETICS

## THE STARTER

Our starter kit includes essential tools to get your students going along with Pivot Point *Fundamentals: Esthetics* on LAB with a printed study guide.



**LAB STUDENT SEAT INCLUDING  
PIVOT POINT FUNDAMENTALS: ESTHETICS**



**PRINTED STUDY GUIDE**  
The perfect complement to the digital program delivered through LAB.

### EDUCATION

Pivot Point *Fundamentals: Esthetics*  
Printed Study Guide

#### 24-MONTH LAB SEAT:

- Skills and Service
- Workshop Videos
- Downloadable eBooks
- Integrated Lesson WebBooks
- Learning Connections
- Slide Presentations
- Client Intake Forms
- Rubrics
- Exam Ace

### TOOLS

#### SKIN CARE

- Large Mixing Bowl
- Medium Mixing Bowl
- Small Mixing Bowl
- Small Fan Mask Brush
- Glycolic Fan Mask Brush
- Boar Body Brush
- Paraffin Body Mask Brush
- 6-Pc. Esthetics Tool Kit
  - » Comedo Extractor
  - » Needle-Nose Tweezer
  - » Slant Tweezer
  - » Schamberg Extractor
  - » Single-Ended Comedo Extractor
  - » Lancet Extractor

- Jade Roller
- Spatula
- Circular Sponges

#### WAXING

- Small Wood Applicator Sticks
- Large Wood Applicator Sticks
- Non-Woven Wax Strip Wheel
- Non-Woven Wax Strips

#### A LA CARTE

- Stork Scissors
- Hand Mirror
- Backpack
- Cotton Balls
- Terry Cloth Headband
- Terry Cloth Spa Wrap
- Apron



#### 6-PC. ESTHETICS TOOL KIT

- Comedo Extractor
- Needle-Nose Tweezer
- Slant Tweezer
- Schamberg Extractor
- Single-ended Comedo Extractor
- Lancet Extractor



**JADE ROLLER**



**APRON**



**HAND MIRROR**



**LARGE MIXING BOWL**



**NON-WOVEN WAX STRIPS**



**FAN MASK BRUSH**



**BOAR BODY BRUSH**



**BACKPACK**

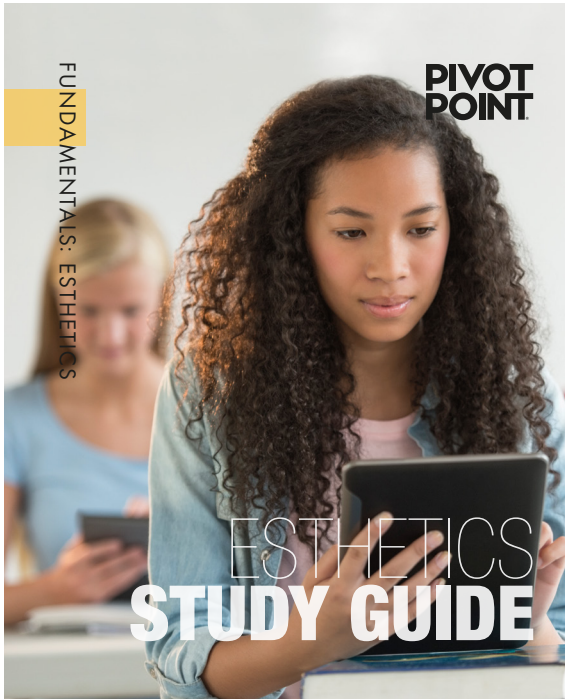


**STORK SCISSORS**

# FUNDAMENTALS: ESTHETICS

## THE NOVICE

Our entry-level kit adds more tools to the starter kit to elevate your overall student experience alongside Pivot Point *Fundamentals: Esthetics* on LAB with a printed study guide.



**PRINTED STUDY GUIDE**  
The perfect complement to the digital program delivered through LAB.



**HAND MIRROR**

**PARAFFIN BODY MASK BRUSH**



**MASSAGE TRAINING HEAD**



**BOAR BODY BRUSH**



**LUGGAGE ON WHEELS**



**TERRY CLOTH HEADBAND**

**CIRCULAR SPONGES**

### EDUCATION

Pivot Point *Fundamentals: Esthetics*

Printed Study Guide

24-MONTH LAB SEAT:

- Skills and Service Workshop Videos
- Downloadable eBooks
- Integrated Lesson WebBooks
- Learning Connections
- Slide Presentations
- Client Intake Forms
- Rubrics
- Exam Ace



**6-PC. ESTHETICS TOOL KIT**

Comedo Extractor	Single-Ended Comedo Extractor
Needle-Nose Tweezer	Lancet Extractor
Slant Tweezer	
Schamberg Extractor	



**MIXING PALETTE**

### TOOLS

#### SKIN CARE

- Large Mixing Bowl
- Medium Mixing Bowl
- Small Mixing Bowl
- Small Fan Mask Brush
- Glycolic Fan Mask Brush
- Boar Body Brush
- Paraffin Body Mask Brush

#### 6-Pc. Esthetics Tool Kit

- » Comedo Extractor
- » Needle-Nose Tweezers
- » Slant Tweezer
- » Schamberg Extractor
- » Single-Ended Comedo Extractor
- » Lancet Extractor

Jade Roller

Spatula

Circular Sponges



**MASCARA WAND**

**JADE ROLLER**

#### WAXING

- Small Wood Applicator Sticks
- Large Wood Applicator Sticks
- Non-Woven Wax Strip Wheel
- Non-Woven Wax Strips

#### A LA CARTE

- Stork Scissors
- Hand Mirror
- Luggage on Wheels
- Cotton Balls
- Cotton Roll
- Terry Cloth Headband
- Terry Cloth Spa Wrap
- Apron
- Comb-Out Cape
- Massage Training Head

#### MAKEUP

- 10 Makeup Wheel Palette
- Mixing Palette
- 10-Pc. Crown Makeup Brush Set
- Foam Makeup Wedges
- Disposable Mascara Wands
- Disposable Eye Shadow Applicators
- Disposable Lip Brushes

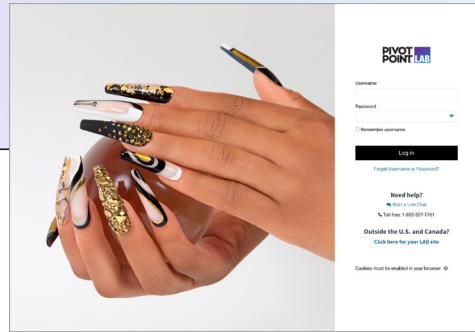


**10-PC. CROWN MAKEUP BRUSH SET**

# FUNDAMENTALS: NAILS

## THE STARTER

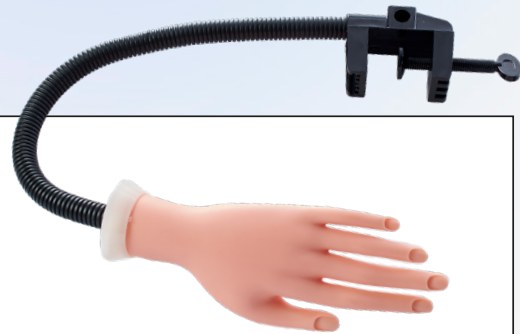
Our starter kit includes essential tools to get your students going along with Pivot Point *Fundamentals: Nails* on LAB with a printed study guide.



**LAB STUDENT SEAT INCLUDING PIVOT POINT FUNDAMENTALS: NAILS**



**PRINTED STUDY GUIDE**  
The perfect complement to the digital program delivered through LAB.



**NAIL PRACTICE HAND**



**MANICURE BOWL**



**DOTTING TOOL SET**



**4-PC. GEL BRUSH SET**



**BLACK FILE 80/80 GRIT**

### EDUCATION

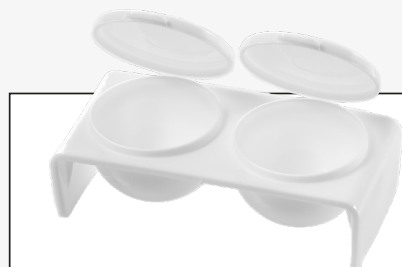
Pivot Point *Fundamentals: Nails*  
Printed Study Guide

### 24-MONTH LAB SEAT:

- Skills and Service
- Workshop Videos
- Downloadable eBooks
- Integrated Lesson WebBooks
- Learning Connections
- Slide Presentations
- Client Intake Forms
- Rubrics
- Exam Ace



**MANICURE KIT**



**DOUBLE DAPPEN DISH**



**3-IN-1 PURPLE BUFFER**

### TOOLS

#### NAIL BRUSHES

- #8 Kolinsky Brush
- #10 Kolinsky Brush
- #12 Kolinsky Brush
- 4-Pc. Nail Art Brush Set
  - » Nail Art Brush
  - » Striper Brush
  - » Liner Brush
  - » Mini Liner Brush
- 4-Pc. Gel Brush Set
  - » #4 Round Brush
  - » #4 Flat Brush
  - » #6 Round Brush
  - » #1 Design Brush
- French Manicure Clean-Up Brush



**BACKPACK**



**#8 KOLINSKY BRUSH**



**4-PC. NAIL ART BRUSH SET**

#### FILES AND BUFFERS

- 2 3-in-1 Purple Buffer
- 180/280/280 Grit
- 2 White Buffer Block 100 Grit
- 8 Black File 80/80 Grit
- 8 Black File 100/180 Grit
- Red Sanitizable Foot File
- Ingrown Nail File

#### NAIL ENHANCEMENT

- Double Dappen Dish
- Nail Forms
- Nail Tips
- Plastic Organizer
- Nail Slicer

#### MANICURE/PEDICURE

- 6-Pc. Manicure Kit
  - » Slant Tweezer
  - » Cuticle Nippers
  - » Cuticle Pusher
  - » Fingernail Clippers
  - » Toenail Clippers
  - » Manicure Scissors
- Manicure Bowl
- Manicure Brush
- Pedislippers
- Toe Separators

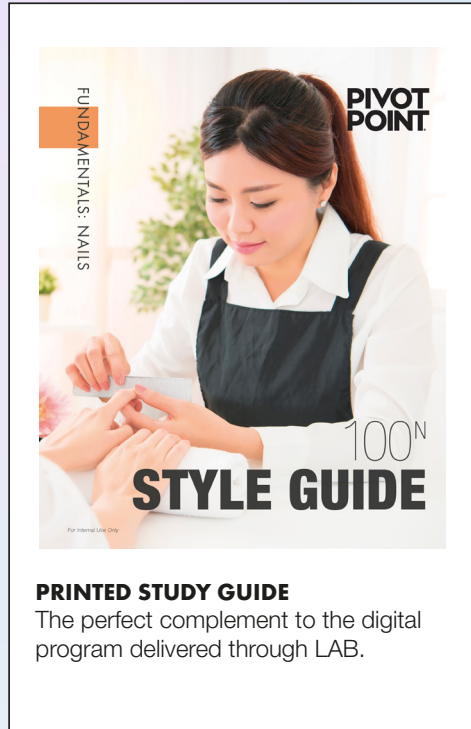
#### A LA CARTE

- Dotting Tool Set
- Stainless Steel Spatula
- Utility Tray
- Birchwood Sticks
- Lint Free Pads
- Plastic Dropper
- Liquid Pump Bottle
- Porcelain Jar With Lid
- Backpack
- Nail Practice Hand

# FUNDAMENTALS: NAILS

## THE NOVICE

Our entry-level kit adds more tools to the starter kit to elevate your overall student experience alongside Pivot Point *Fundamentals: Nails* on LAB with a printed study guide.



**PRINTED STUDY GUIDE**  
The perfect complement to the digital program delivered through LAB.



**FLAT SABLE BRUSH**



**4-PC. NAIL ART BRUSH SET**



**NAIL FORMS**



**SALON TROLLEY**

### EDUCATION

Pivot Point *Fundamentals: Esthetics*  
Printed Study Guide  
24-MONTH LAB SEAT:  
Skills and Service  
Workshop Videos  
Downloadable eBooks  
Integrated Lesson WebBooks  
Learning Connections  
Slide Presentations  
Client Intake Forms  
Rubrics  
Exam Ace



**INGROWN NAIL FILE**



**DOTTING TOOL SET**

### TOOLS

#### NAIL BRUSHES

- #8 Kolinsky Brush
- #10 Kolinsky Brush
- #12 Kolinsky Brush
- 4-Pc. Nail Art Brush Set
  - » Nail Art Brush
  - » Striper Brush
  - » Liner Brush
  - » Mini Liner Brush
- 4-Pc. Gel Brush Set
  - » #4 Round Brush
  - » #4 Flat Brush
  - » #6 Round Brush
  - » #1 Design Brush
- French Manicure Clean-Up Brush
- Pure Red Sable Brush
- Flat Sable Brush

#### FILES AND BUFFERS

- 2 3-in-1 Purple Buffer  
180/280/280 Grit
- 2 White Buffer Block 100 Grit
- 8 Black File 80/80 Grit
- 8 Black File 100/180 Grit
- Red Sanitizable Foot File
- Ingrown Nail File

#### NAIL ENHANCEMENT

- Double Dappen Dish
- Nail Forms
- Nail Tips
- Plastic Organizer
- Nail Slicer

#### MANICURE/PEDICURE

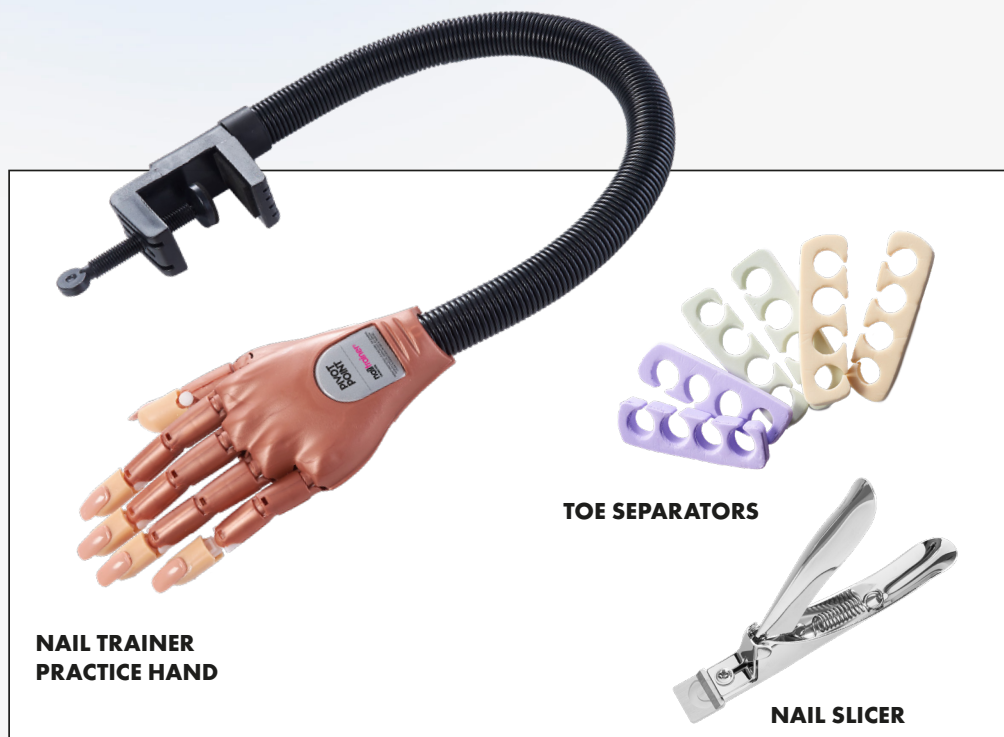
- 6-Pc. Manicure Kit
  - » Slant Tweezer
  - » Cuticle Nippers
  - » Cuticle Pusher
  - » Fingernail Clippers
  - » Toenail Clippers
  - » Manicure Scissors
- Manicure Bowl
- Manicure Brush
- Pedislippers
- Toe Separators

#### E-FILE

- Medicool Pro Power 520
- Medicool Standard Bit Kit

#### A LA CARTE

- Dotting Tool Set
- Stainless Steel Spatula
- Utility Tray
- Birchwood Sticks
- Lint Free Pads
- Plastic Dropper
- Liquid Pump Bottle
- Porcelain Jar With Lid
- Backpack
- Nail Trainer Practice Hand
- Salon Trolley
- Practice Finger



**NAIL TRAINER PRACTICE HAND**

**TOE SEPARATORS**

**NAIL SLICER**



**MANICURE BRUSH**



**MEDICOOL PRO POWER 520**

**PRACTICE FINGER**



# AS REAL AS IT GETS!

OUR EXPANDED RANGE OF CURL PATTERNS, FROM WAVY TO COILY, **ELIMINATES** THE EXTRA **PREP** TIME. NOW, YOU HAVE A WIDE VARIETY AVAILABLE—**OFF THE SHELF!**

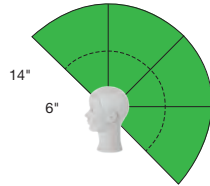
**PIVOT  
POINT**

**#LookForTheTag**





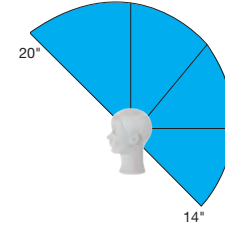
**ROBIN**  
MMSUYDLD



Hair Length: 14" + 6"  
Hair Type: Yak



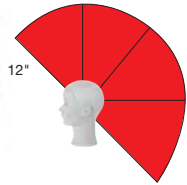
**MICHELLE**  
MBLSIDMD-10C



Hair Length: 20" - 14"  
Hair Type: Indian



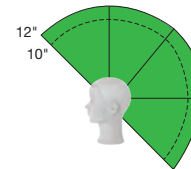
**JANET**  
MMSIIDLD-7C



Hair Length: 12" - 16"  
Hair Type: Indian



**MAYA**  
MMMUIDLD-TC



Hair Length: 12" + 10"  
Hair Type: Indian

**KEY**

**TEXTURE**



  
 Straight    Wavy    Very Wavy  
                  15 mm    10 mm



  
 Curly    Very Curly    Coily  
                  7 mm    5 mm    3 mm

**COLOR**



  
 Black    Dark    Medium Dark



  
 Medium    Medium Light    Light



  
 Ultra Light    White    Gray

**HEAD SIZE**



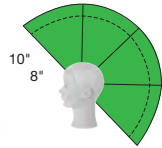
  
 Large    Medium    Small

**PIVOT  
POINT.**

**847-866-0500**  
**PIVOT-POINT.COM**



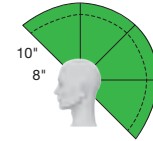
**AMBER**  
MMSUIDLD-TC



Hair Length: 10" + 8"  
Hair Type: Indian



**CAMERON**  
MPMUIDMD-3C



Hair Length: 10" + 8"  
Hair Type: Indian

**KEY**

**TEXTURE**

Straight    Wavy 15 mm    Very Wavy 10 mm

Curly 7 mm    Very Curly 5 mm    Coily 3 mm

**COLOR**

Black    Dark    Medium Dark

Medium    Medium Light    Light

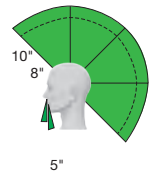
Ultra Light    White    Gray

**HEAD SIZE**

Large    Medium    Small



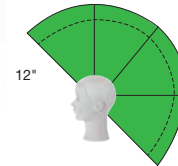
**ELIJAH**  
MPMUIDMD-8BR5C



Hair Length: 10" + 8"  
Beard Length: 5"  
Hair Type: Indian



**MULTI-TEXTURE QUADRANT**  
MMMUIDLD-TC-4P



Hair Length: 12"  
Hair Type: Indian

**PIVOT POINT**

**847-866-0500**  
**PIVOT-POINT.COM**



# EXPLORE WITH COLOR

Whether you're conducting trainings, testing vivids or looking for a brilliant lift, all of our hair products start with the highest quality of raw hair and follow a careful processing method, all to ensure you have the most realistic results.

**PIVOT  
POINT**



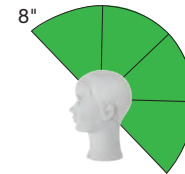
**#LookForTheTag**



Designed specifically for color training, the Bicolor mannequin is ideal for highlights, lowlights and direct dyes. Featuring two distinct ultra-light and dark zones, you can dedicate your attention to specific challenges that replicate real-life scenarios with side-by-side comparison.

**BICOLOR**

MMSUIZLL-2P

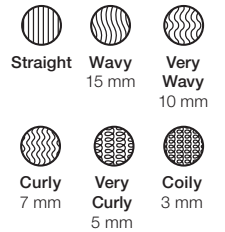


Hair Length: 8"  
Hair Type: Indian\*

\*Indian hair is less chemically resistant than Chinese hair. Keep in mind this hair has been previously lightened to the featured color level. Always perform a strand test when working with chemicals.

**KEY**

**TEXTURE**



**COLOR**



**HEAD SIZE**

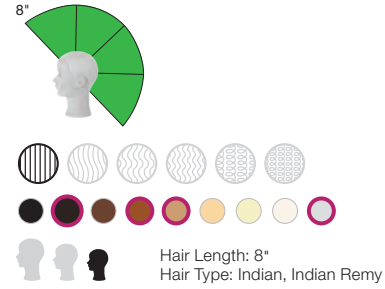




**COLOR QUADRANT**

MMSUZZLL-4P

Designed specifically for color exercises including highlights, lowlights and techniques to color gray hair. The quadrant isolates specific parts of the head, allowing you to dedicate your attention to specific challenges that replicate real-life scenarios.



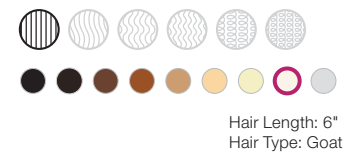
**HAIR SWATCH KIT**

HS-70



**WHITE HAIR SWATCH (50PC)**

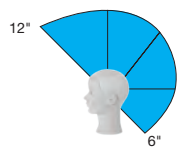
HS-50W





**DIANE**

MMSSCLLL

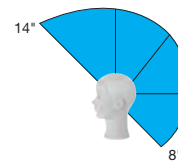


Hair Length: 12" - 6"  
Hair Type: Chinese



**BRIDGETTE MARIE**

MMMMSLML

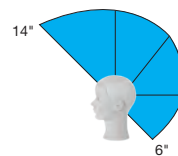


Hair Length: 14" - 8"  
Hair Type: Chinese



**ALYSE**

MMSSCZLL

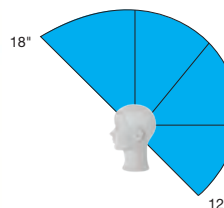


Hair Length: 14" - 6"  
Hair Type: Chinese



**MADI**

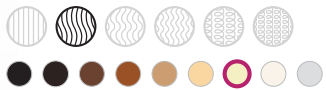
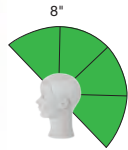
MMSSC7LL-XL



Hair Length: 18" - 12"  
Hair Type: Chinese



**LANA**  
MMSUILLL

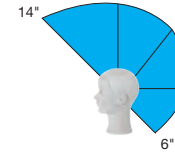


Hair Length: 8"  
Hair Type: Indian\*

*\*Indian hair is less chemically resistant than Chinese hair. Keep in mind this hair has been previously lightened to the featured color level. Always perform a strand test when working with chemicals.*



**GWYN**  
MMSS19LL

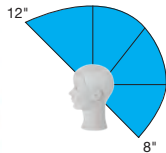


Hair Length: 14" - 6"  
Hair Type: Indian\*

*\*Indian hair is less chemically resistant than Chinese hair. Keep in mind this hair has been previously lightened to the featured color level. Always perform a strand test when working with chemicals.*



**SOPHIA**  
MMSGWCT



Hair Length: 12" - 8"  
Hair Type: Goat



**SOPHIA WEFT**  
HW-GW3050



Hair Length: 12" L x 20" W  
Hair Type: Goat

**PIVOT  
POINT.**

**847-866-0500**  
**PIVOT-POINT.COM**

# PIVOT POINT SLIP-ON

**PIVOT POINT, THE ORIGINAL INVENTOR OF SLIP-ON EDUCATIONAL HAIR PRODUCTS, IS BRINGING THE PRODUCT BACK IN ORDER TO MAKE HIGH QUALITY EDUCATIONAL HAIR ACCESSIBLE TO ALL.**

The Slip-on system utilizes one recyclable headform that allows for the use of both male and female Slip-on masks. This expands the educational opportunities without increasing your carbon footprint. Pivot Point's Slip-on products are hand implanted by skilled artisans to create the realistic human hair growth patterns that the industry expects from Pivot Point.

**FEMALE SLIP-ON**



**MALE SLIP-ON**



**UNIVERSAL HEADFORM**  
BAND SHIPS WITH HEADFORM (Not Shown)



## LOOK FOR THE TAG

Pivot Point proactively requested SA8000® certification from our contracted hair-manufacturing factory to ensure the quality of goods match the well-being of the artisans who create them. The SA8000 certification affords our partners the confidence that our educational hair goods are produced in sanctioned conditions.

SA8000 certification solidifies a commitment to human rights by guarding against the use of child and forced labor, discrimination and unfair disciplinary practices, working hours and compensation.



#LookForTheTag

CONTACT PIVOT POINT FOR PRICING:

**847-866-0500**

[PIVOT-POINT.COM](http://PIVOT-POINT.COM)

**PIVOT  
POINT**

## STARTER BUNDLE



**FEMALE X2**



**MALE**



**UNIVERSAL  
HEADFORM**

## COMPLETE BUNDLE



**FEMALE X2**



**MALE**



**UNIVERSAL  
HEADFORM**



**TIGHTLY CURLED**



**LONG HAIR**

CONTACT PIVOT POINT FOR PRICING:

**847-866-0500**

[PIVOT-POINT.COM](http://PIVOT-POINT.COM)

**CONTACT  
US TODAY!**

**847-866-0500**

**[www.pivot-point.com](http://www.pivot-point.com)**

**[info@pivot-point.com](mailto:info@pivot-point.com)**



**PIVOT  
POINT®**